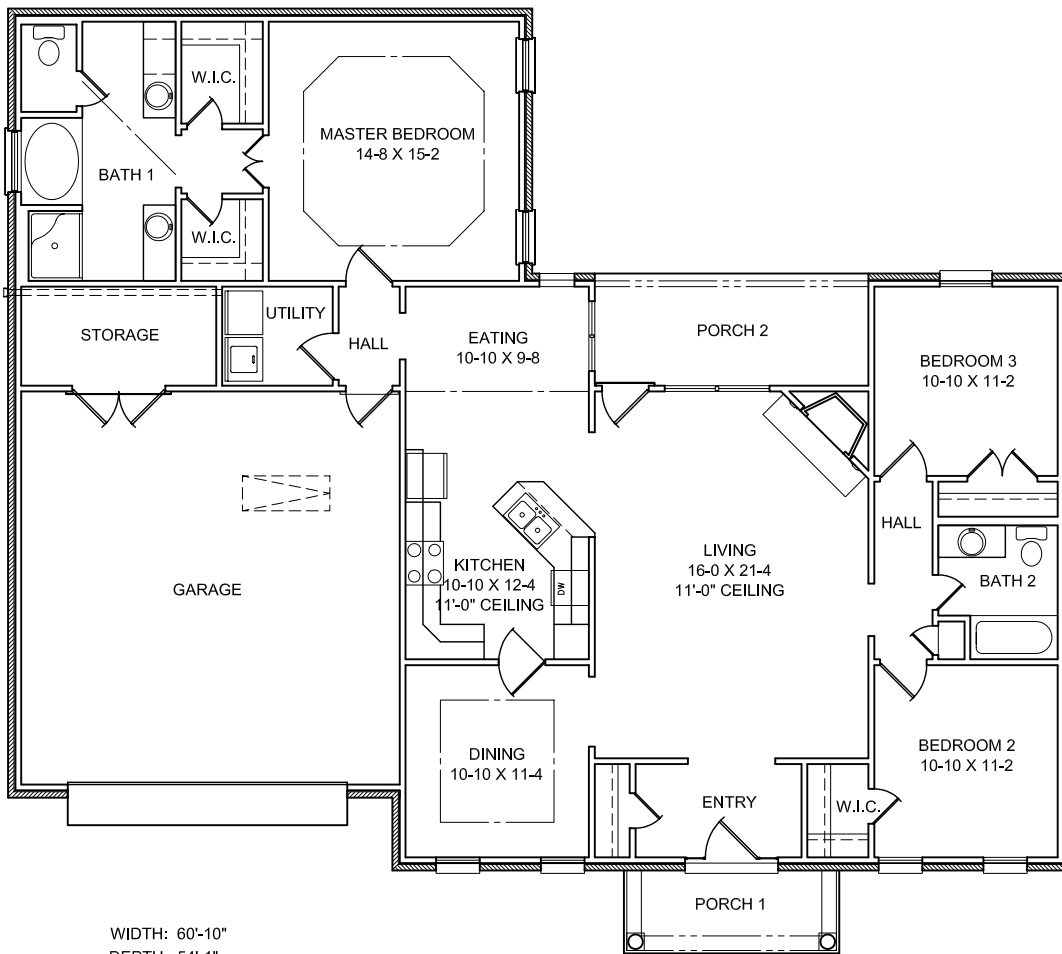
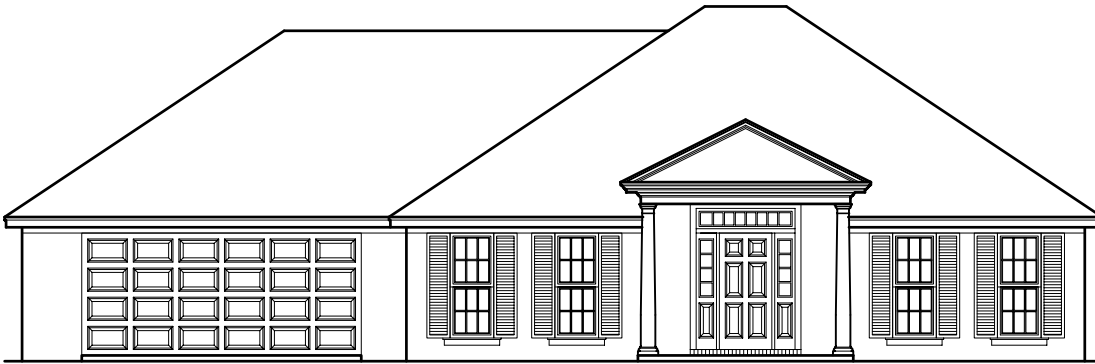


# Natchez



WIDTH: 60'-10"  
DEPTH: 54'-1"

MASONRY

LIVING  
GARAGE AND STORAGE  
PORCH  
TOTAL UNDER ROOF

1749 SQUARE FEET  
593 SQUARE FEET  
160 SQUARE FEET  
2502 SQUARE FEET