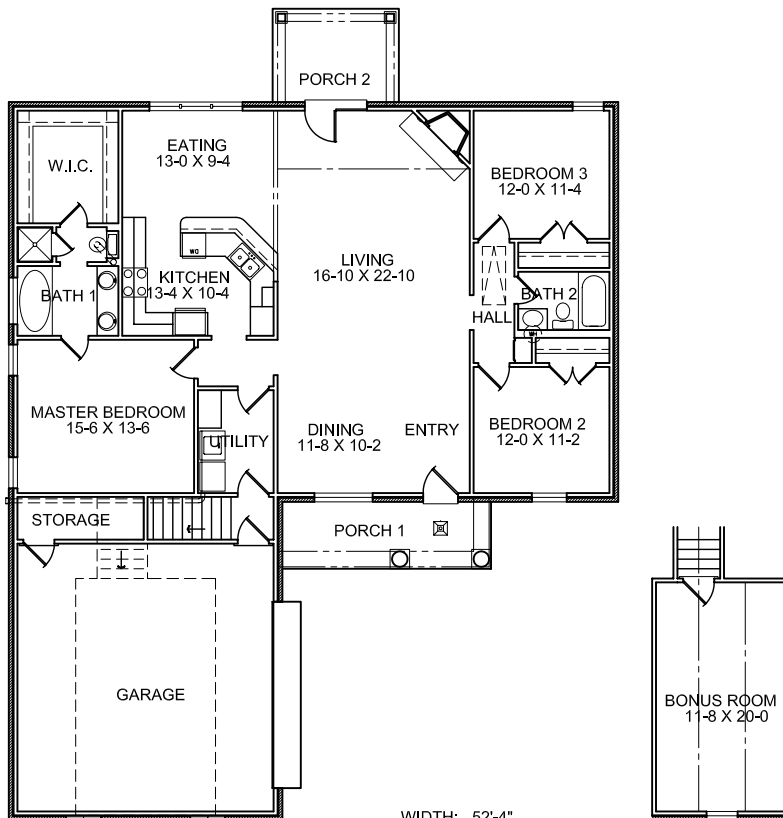


Oxford

Revised



WIDTH: 52'-4"
DEPTH: 69'-8"

LIVING
BONUS ROOM
GARAGE & STORAGE
PORCH
TOTAL UNDER ROOF

WITH BRICK
1835 SQ. FT.
306 SQ. FT.
604 SQ. FT.
175 SQ. FT.
2920 SQ. FT.