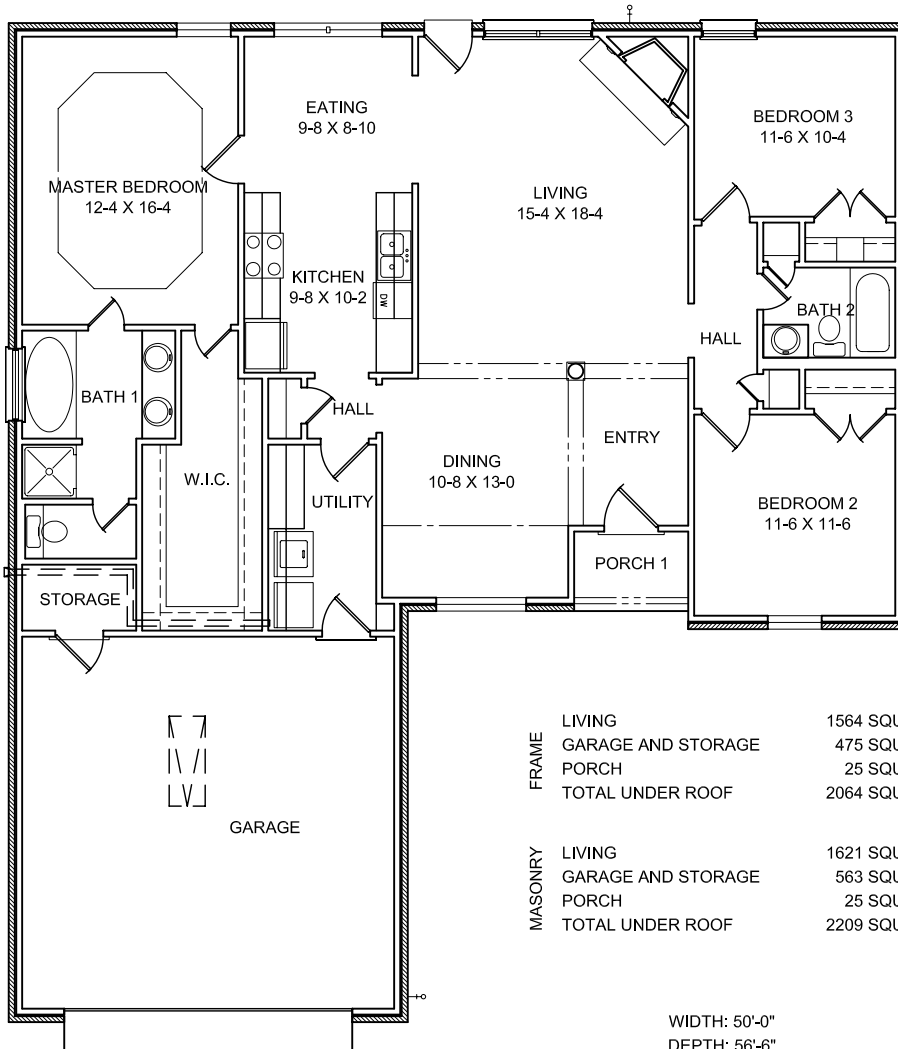
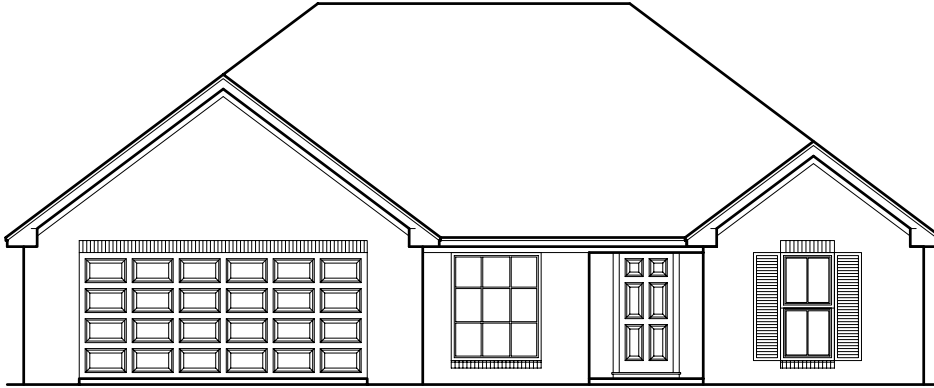


"The St. John"



FRAME	LIVING	1564 SQUARE FEET
	GARAGE AND STORAGE	475 SQUARE FEET
	PORCH	25 SQUARE FEET
	TOTAL UNDER ROOF	2064 SQUARE FEET

MASONRY	LIVING	1621 SQUARE FEET
	GARAGE AND STORAGE	563 SQUARE FEET
	PORCH	25 SQUARE FEET
	TOTAL UNDER ROOF	2209 SQUARE FEET

WIDTH: 50'-0"
DEPTH: 56'-6"