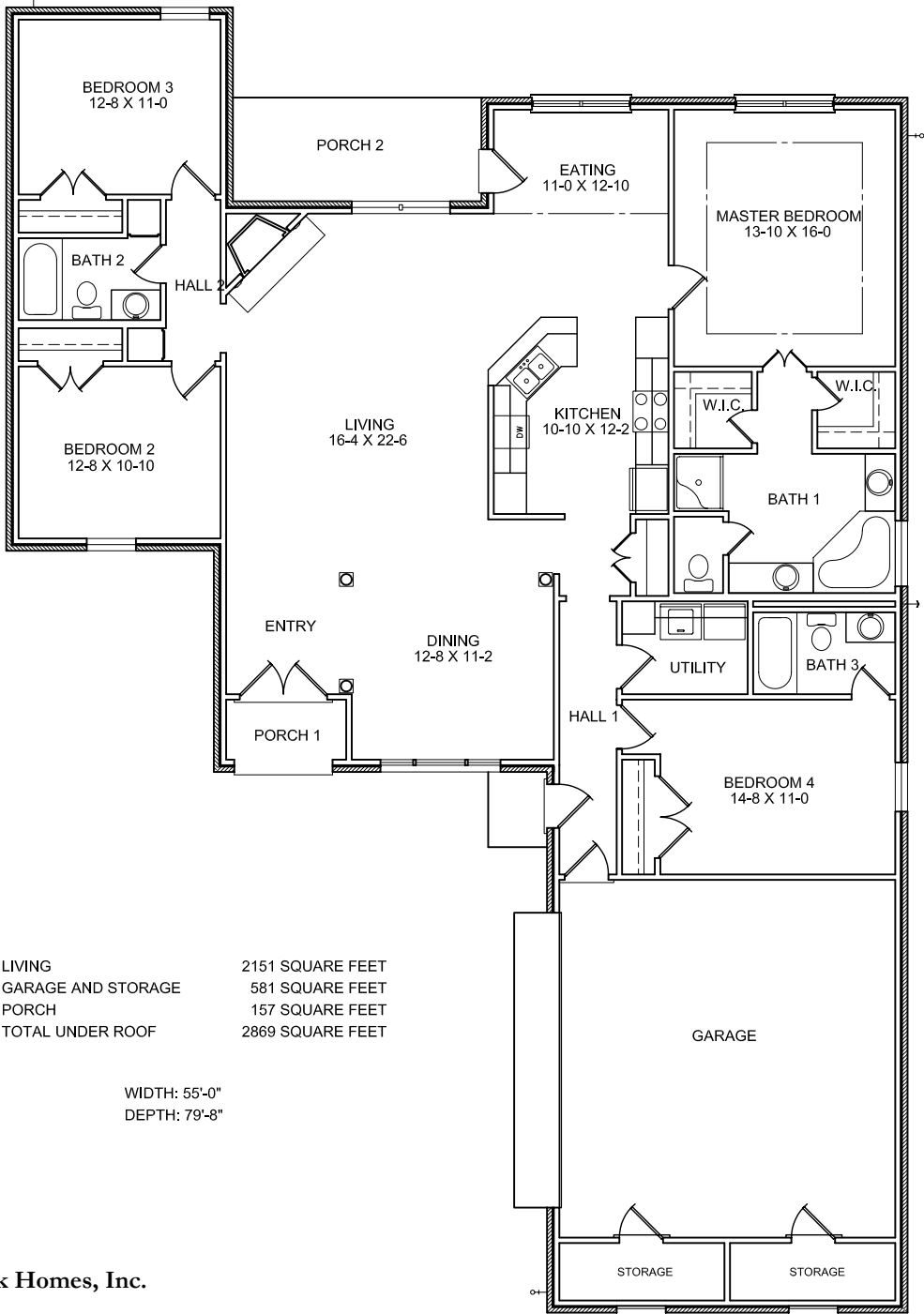


# Baton Rouge



MASONRY	LIVING	2151 SQUARE FEET
	GARAGE AND STORAGE	581 SQUARE FEET
	PORCH	157 SQUARE FEET
	TOTAL UNDER ROOF	2869 SQUARE FEET

WIDTH: 55'-0"  
DEPTH: 79'-8"